

## Modular Cooking Range Line EVO700 One Well Electric Fryer Top 7 liter

ITEM # \_\_\_\_\_

MODEL # \_\_\_\_\_

NAME # \_\_\_\_\_

SIS # \_\_\_\_\_

AIA # \_\_\_\_\_

**372075 (Z7FRED1B00)**

7-lt electric fryer top with 1 "V" shape well (external heating elements), 1 basket and lid included

**372140 (Z7FRED120N)**

7-lt electric fryer top with 1 "V" shape well (external heating elements) and 1 basket

### Short Form Specification

#### Item No. \_\_\_\_\_

To be installed on open base installations, bridging supports or cantilever systems. High efficiency infrared heating elements (5.4kW) attached to the outside of the well. Deep drawn V-shaped well. Oil drains through a tap on the front. Exterior panels in stainless steel with Scotch Brite finish. One piece pressed work top in 1.5 mm thick stainless steel. Right-angled side edges to allow flush-fitting junction between units.

### Main Features

- Unit to be mounted on open base cupboards, bridging supports or cantilever systems.
- Deep drawn V-Shaped well.
- High efficiency infrared heating elements (5,4kW) are attached to the outside of the well.
- Thermostatic regulation of oil temperature up to a maximum of 185 °C.
- Overheat protection thermostat as standard on all units.
- Oil drains through a tap positioned on the front the well.
- All major compartments located in front of unit for ease of maintenance.
- IPx4 water protection.
- Optional portable oil quality monitoring tool (code 9B8081) for efficient oil management. (only for 372075)
- Suitable for countertop installation. (only for 372075)

### Construction

- Interior of well with rounded corners for ease of cleaning.
- All exterior panels in Stainless Steel with Scotch Brite finishing.
- One piece pressed 1.5 mm work top in Stainless steel.
- Model has right-angled side edges to allow flush fitting joints between units, eliminating gaps and possible dirt traps.

### Sustainability

- This model is compliant with Swiss Energy Efficiency Ordinance (730.02). (only for 372075)

APPROVAL: \_\_\_\_\_

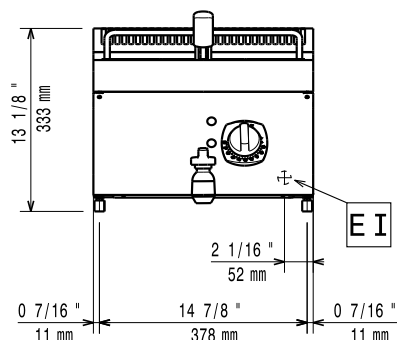
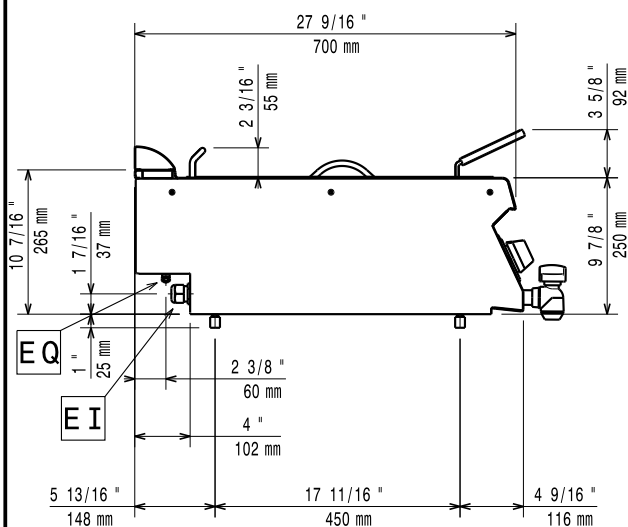
## Included Accessories

- 1 of Basket for 7lt top and free standing PNC 921608 fryers

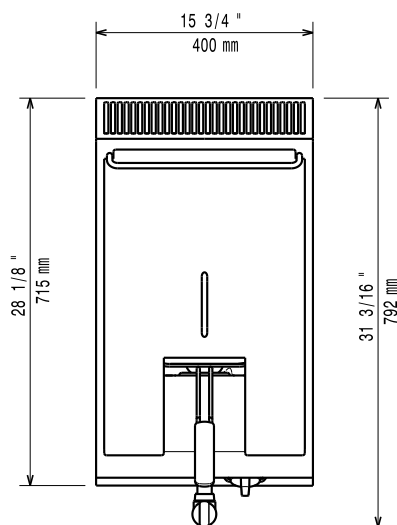
## Optional Accessories

- |  |            |                          |
|--|------------|--------------------------|
| • Junction sealing kit (only for 372075)                                 | PNC 206086 | <input type="checkbox"/> |
| • Support for bridge type installation, 800 mm                           | PNC 206137 | <input type="checkbox"/> |
| • Support for bridge type installation, 1000 mm                          | PNC 206138 | <input type="checkbox"/> |
| • Support for bridge type installation, 1200 mm                          | PNC 206139 | <input type="checkbox"/> |
| • Support for bridge type installation, 1400 mm                          | PNC 206140 | <input type="checkbox"/> |
| • Support for bridge type installation, 1600 mm                          | PNC 206141 | <input type="checkbox"/> |
| • Support for bridge type installation, 400 mm                           | PNC 206154 | <input type="checkbox"/> |
| • Frontal handrail 400 mm  | PNC 206166 | <input type="checkbox"/> |
| • Frontal handrail 800 mm  | PNC 206167 | <input type="checkbox"/> |
| • Large handrail (portioning shelf) 400 mm                               | PNC 206185 | <input type="checkbox"/> |
| • Large handrail (portioning shelf) 800 mm                               | PNC 206186 | <input type="checkbox"/> |
| • Frontal handrail 1200 mm   | PNC 206191 | <input type="checkbox"/> |
| • Frontal handrail 1600 mm   | PNC 206192 | <input type="checkbox"/> |
| • Right and left side handrails (only for 372075)                        | PNC 206240 | <input type="checkbox"/> |
| • Chimney upstand, 400 mm  | PNC 206303 | <input type="checkbox"/> |
| • 2 side covering panels, height 250 mm, depth 700 mm                    | PNC 206320 | <input type="checkbox"/> |
| • Base support for feet or wheels - 400mm (EVO700/900) (only for 372140) | PNC 206366 | <input type="checkbox"/> |
| • Chimney grid net, 400mm (only for 372075)                              | PNC 206400 | <input type="checkbox"/> |
| • Basket for 7lt top and free standing fryers                            | PNC 921608 | <input type="checkbox"/> |
| • 2 baskets for 2x5/12lt electric fryers (only for 372140)               | PNC 960638 | <input type="checkbox"/> |

# Modular Cooking Range Line EVO700 One Well Electric Fryer Top 7 liter

**Front**

**Side**


**EI** = Electrical inlet (power)  
**EQ** = Equipotential screw

**Top**


## Electric

### Supply voltage:

|                     |                          |
|---------------------|--------------------------|
| 372075 (Z7FRED1B00) | 380-400 V/3N ph/50-60 Hz |
| 372140 (Z7FRED120N) | 230 V/3 ph/50/60 Hz      |

### Predisposed for:

|              |        |
|--------------|--------|
| Total Watts: | 5.4 kW |
|--------------|--------|

## Key Information:

If appliance is set up or next to or against temperature sensitive furniture or similar, a safety gap of approximately 150 mm should be maintained or some form of heat insulation fitted.

|   |                        |
|---|------------------------|
| <b>Usable well dimensions (width):</b>  | 240 mm                 |
| <b>Usable well dimensions (height):</b> | 235 mm                 |
| <b>Usable well dimensions (depth):</b>  | 380 mm                 |
| <b>Well capacity:</b>                   | 5.5 lt MIN; 7 lt MAX   |
| <b>Thermostat Range:</b>                | 105 °C MIN; 185 °C MAX |
| <b>Net weight:</b>                      | 30 kg                  |
| <b>Shipping weight:</b>                 |                        |
| 372075 (Z7FRED1B00)                     | 29 kg                  |
| 372140 (Z7FRED120N)                     | 35 kg                  |
| <b>Shipping height:</b>                 |                        |
| 372075 (Z7FRED1B00)                     | 520 mm                 |
| 372140 (Z7FRED120N)                     | 540 mm                 |
| <b>Shipping width:</b>                  |                        |
| 372075 (Z7FRED1B00)                     | 460 mm                 |
| 372140 (Z7FRED120N)                     | 500 mm                 |
| <b>Shipping depth:</b>                  | 820 mm                 |
| <b>Shipping volume:</b>                 |                        |
| 372075 (Z7FRED1B00)                     | 0.2 m <sup>3</sup>     |
| 372140 (Z7FRED120N)                     | 0.22 m <sup>3</sup>    |
| <b>Certification group:</b>             |                        |
| 372075 (Z7FRED1B00)                     | EFE71M07               |
| 372140 (Z7FRED120N)                     | N7FE2                  |